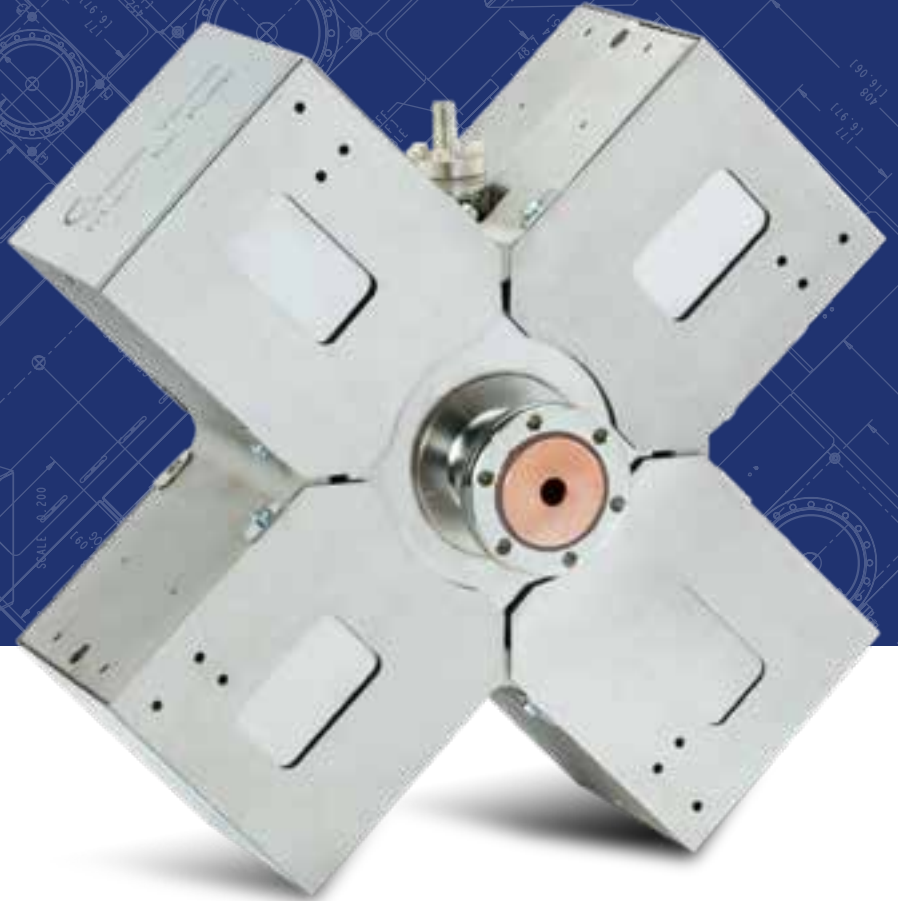
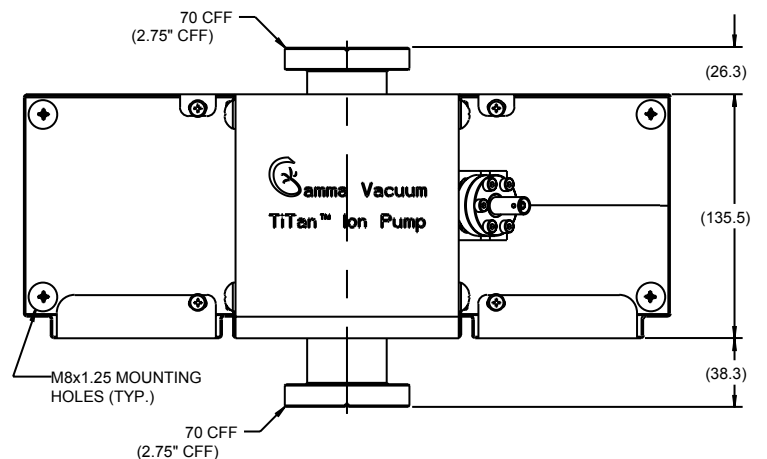
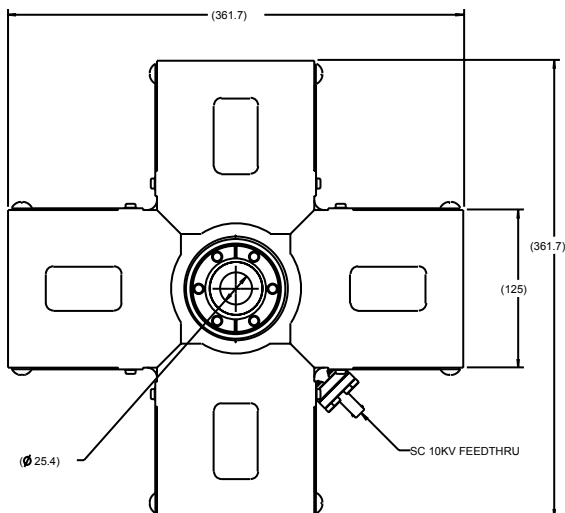


TiTan X-Wing Ion Pump



DIMENSIONAL DETAILS*



TECHNICAL SPECIFICATIONS

Element type	CV	DI
Starting pressure (mbar)	$\leq 1 \times 10^{-3}$	$\leq 1 \times 10^{-3}$
Lifetime (hours @ 10 ⁻⁶ mbar)	50,000	50,000
Ultimate pressure (mbar)	$< 1 \times 10^{-11}$	
Maximum baking temperature (°C)	250 / 450 (without magnets)	
Inlet flange	DN 35 (2.75 in.) CFR	
Weight, kg (lbs)	25 (56)	
Pressure delta (torr)	approx. 1 x decade	

*Alternative configurations available at www.gammavacuum.com

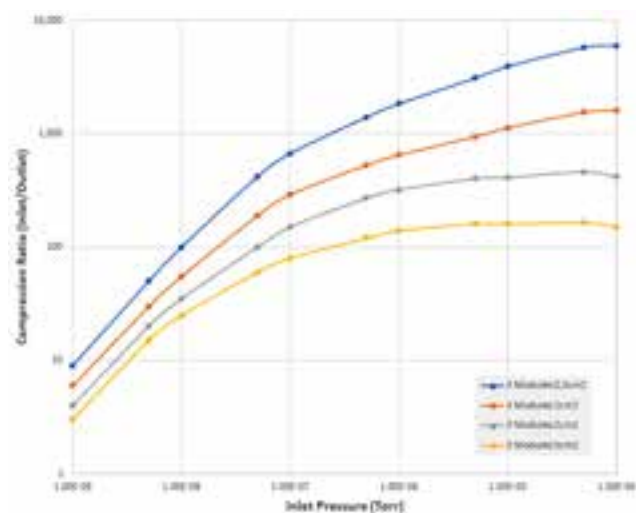
STANDARD OPTIONS*

Element styles		Ports		Feedthroughs		Heaters	
CV	Conventional 100% Titanium	2H	Single DN 35 (2.75 in. CFR)	SC	SAFECONN 10kV SHV	N	No Heaters
DI	Differential 50% Titanium 50% Tantalum			FI	Fischer	110	110-volt 90-130 nominal
						220	220-volt 200-240 nominal

*Configured part numbers and pricing are available at www.gammavacuum.com. Contact us directly for custom engineered options.

PERFORMANCE CHARACTERISTICS

Compression ratio of 3 modules



Compression ratio of single module

