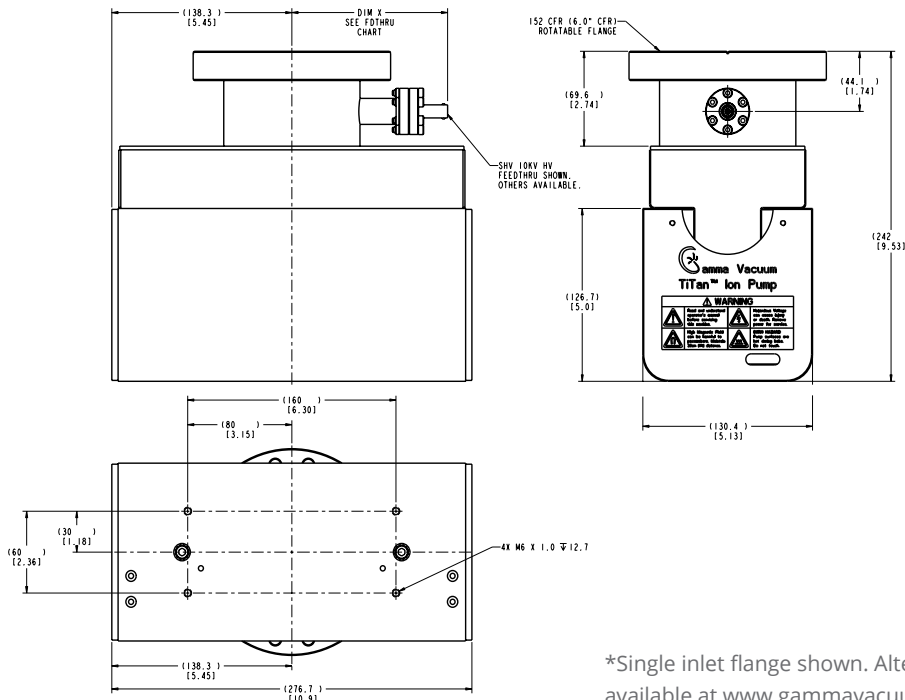


Titan 75S Ion Pump



DIMENSIONAL DETAILS*



*Single inlet flange shown. Alternative configurations available at www.gammavacuum.com

Technical specifications

Element type	CV/CVX	DI/DIX	TR
Pumping speed (l/s, Nitrogen)	75	60	60
Starting pressure (mbar)	$\leq 1 \times 10^{-3}$	$\leq 1 \times 10^{-3}$	$\leq 5 \times 10^{-2}$
Lifetime (hours @ 10^{-6} mbar)	50,000	50,000	80,000
Ultimate pressure (mbar)	$\leq 1 \times 10^{-11}$		
Maximum baking temperature (°C)	250 / 450 (without magnets)		
Inlet flange	DN 100 (6 in.) CFR		
Weight, kg (lbs)	22 (48)		

STANDARD OPTIONS*

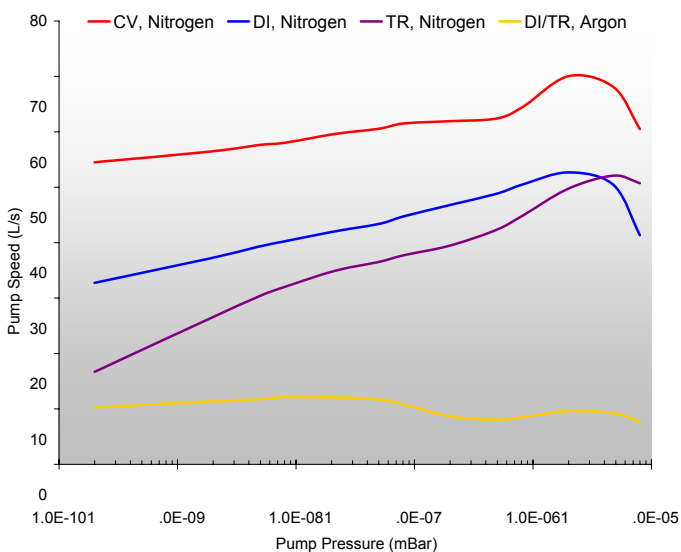
Element type	Ports	Feedthroughs	Heaters	TSP/NEG
CV Conventional 100% Titanium	6S Single DN 100 (6 in. CFR)	SC SAFECONN 10kV SHV	N No heaters	N Not available
CVX Conventional SEM Shielding	62 Double DN 100 (6 in. CFR) DN 35 (2.75 in. CFR)	OP Perkin elmer	110 110-volt 90-130 nominal	N50 50 l/s NEG
DI Differential 50% Titanium 50% Tantalum	4V Single DN 63 (4.5 in. CFR) Vertically oriented	OV Old varian	220 220-volt 200-240 nominal	N100 100 l/s NEG
DIX Differential SEM Shielding	4D Double DN 63 (4.5 in. CFR) DN 35 (2.75 in. CFR)	VR Starcell		N200 200 l/s NEG
TR Triode Slotted Titanium	2V Single DN 35 (2.75 in. CFR) Vertically oriented	FI Fisher		N300 300 l/s NEG
	2D Single DN 35 (2.75 in. CFR) Horizontally oriented			

*Configured part numbers and pricing are available at www.gammavacuum.com. Contact us directly for custom engineered options.

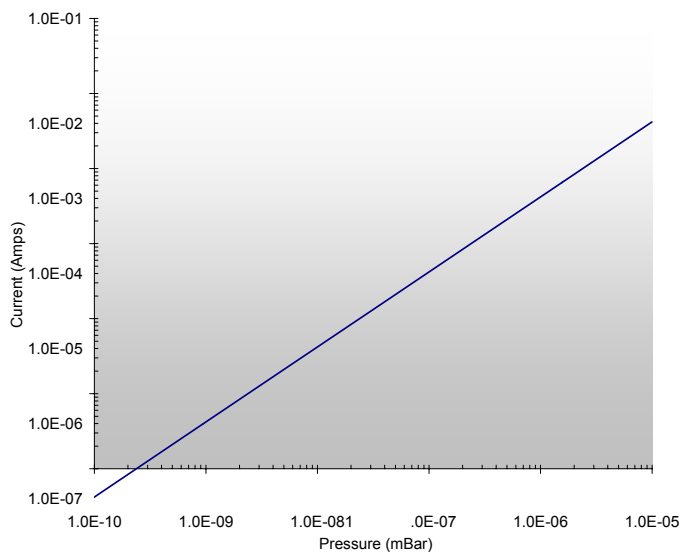
PERFORMANCE CHARACTERISTICS

Pumping Speed vs. Pressure

measured in accordance with ISO/DIS 3556-1.2-1192



Current vs. Pressure



2915 133rd Street West, Shakopee, MN 55379, USA. ☎ 1 800 237 3603, 952 445 4841
 ☎ 1 952 445 4841 ✉ info@gammavacuum.com 🌐 www.gammavacuum.com

© Gamma Vacuum 2018. | Part of the Atlas Copco Group | Publication No. 3601 7818 01

