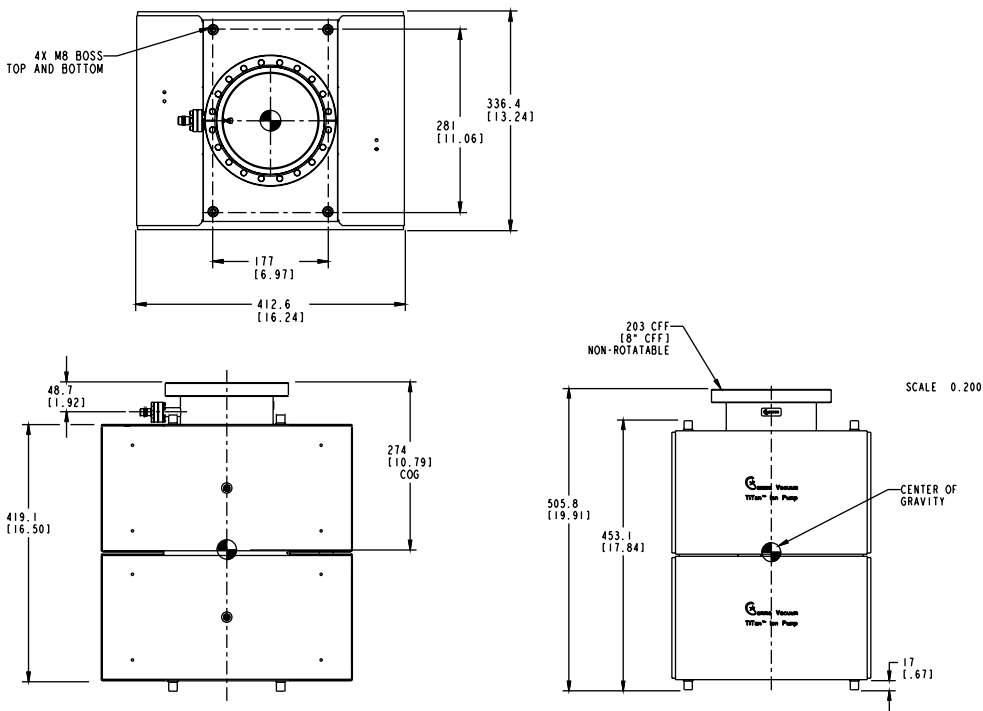


Titan 600LX Ion Pump



DIMENSIONAL DETAILS*



*Single inlet flange shown. Alternative configurations available at www.gammavacuum.com

Technical specifications

| Element type | CV/CVX | DI/DIX | TR |
|-----------------------------------|-----------------------------|-------------------------|-------------------------|
| Pumping speed (l/s, Nitrogen) | 600 | 480 | 480 |
| Starting pressure (mbar) | $\leq 1 \times 10^{-3}$ | $\leq 1 \times 10^{-3}$ | $\leq 5 \times 10^{-2}$ |
| Lifetime (hours @ 10^{-6} mbar) | 50,000 | 50,000 | 50,000 |
| Ultimate pressure (mbar) | $\leq 1 \times 10^{-11}$ | | |
| Maximum baking temperature (°C) | 250 / 450 (without magnets) | | |
| Inlet flange | DN 150 (8 in.) CFF | | |
| Weight, kg (lbs) | 122 (270) | | |

*Single inlet flange shown. Alternative configurations available at www.gammavacuum.com

STANDARD OPTIONS*

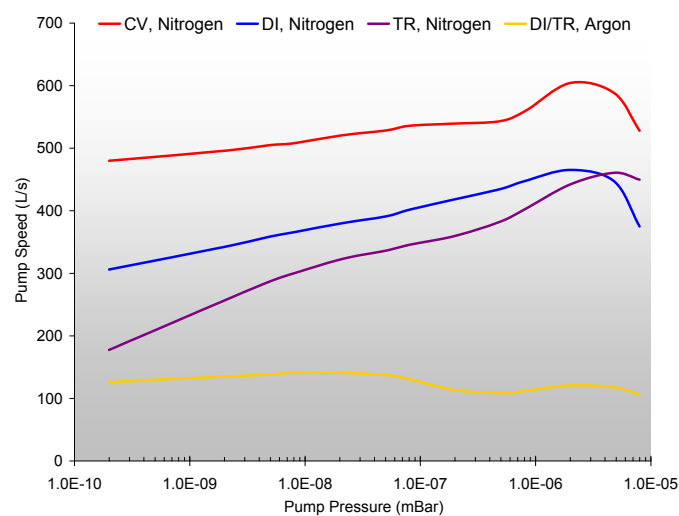
| Element type | Ports | Feedthroughs | Heaters | TSP/NEG |
|---|---|-------------------------|---------------------------------|------------------------------|
| CV Conventional 100% Titanium | 8S Single DN 150 (8 in. CFF) | SC SAFECONN 10kV SHV | N No heaters | N Not available |
| CVX Conventional XHV Optimized | 8D Double DN 150 (8 in. CFF) | OP Perkin Elmer | 110 110-volt 90-130 nominal | TSPA TSP with Ambient Shield |
| DI Differential 50% Titanium 50% Tantalum | 8P Sideport DN 150 (8 in. CFF) DN 150 (8 in. CFF) | OV Old Varian | 220 220-volt 200-240 nominal | TSPC TSP with Cryo Shroud |
| DIX Differential XHV Optimized | 10S Single DN 200 (10 in. CFF) | VR StarCell | | NEG N Series |
| TR Triode Slotted Titanium | 10D Double DN 200 (10 in. CFF) DN 150 (8 in. CFF) | FI Fischer | | |
| | 10P Single DN 200 (10 in. CFF) DN 150 (8 in. CFF) | | | |

*Configured part numbers and pricing are available at www.gammavacuum.com. Contact us directly for custom engineered options.

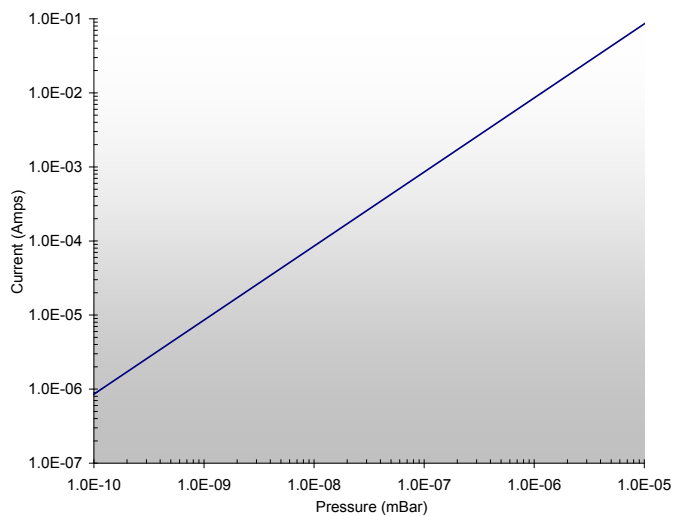
PERFORMANCE CHARACTERISTICS

Pumping Speed vs. Pressure

measured in accordance with ISO/DIS 3556-1.2-1192



Current vs. Pressure



2915 133rd Street West, Shakopee, MN 55379, USA. ☎ 1 800 237 3603, 952 445 4841

✉ 1 952 445 4841 ✉ info@gammavacuum.com 🌐 www.gammavacuum.com

© Gamma Vacuum 2018. | Part of the Atlas Copco Group | Publication No. 3601 7778 01

