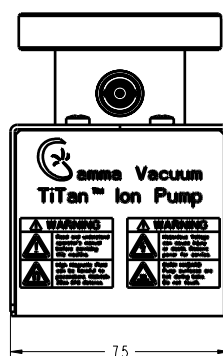
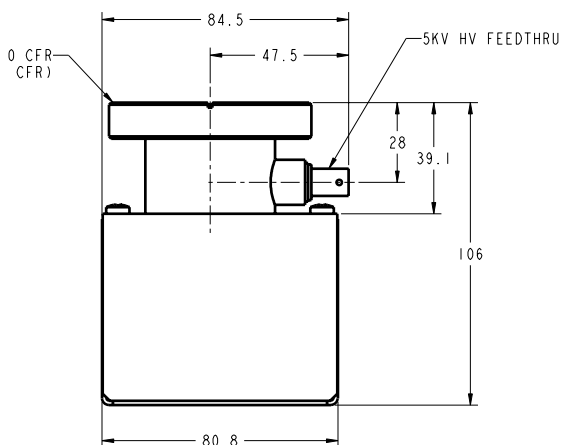
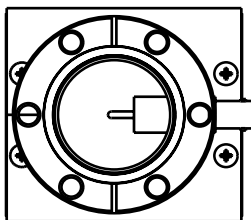


# TiTan 5S Ion Pump



## DIMENSIONAL DETAILS\*



\*Single inlet flange shown.  
Alternative configurations available at  
[www.gammavacuum.com](http://www.gammavacuum.com)

# Technical specifications

Element type	CV	DI
Pumping speed (l/s, Nitrogen)	5	2
Starting pressure (mbar)	$\leq 1 \times 10^{-4}$	$\leq 1 \times 10^{-4}$
Lifetime (hours @ $10^{-6}$ mbar)	50,000	50,000
Ultimate pressure (mbar)	$\leq 1 \times 10^{-11}$	
Maximum baking temperature (°C)	200 / 450 (without magnets)	
Inlet flange	DN 35 (2.75 in.) CFR	
Weight, kg (lbs)	2.3 (5.0)	

The magnets are rare earth materials and not bakeable.

## STANDARD OPTIONS\*

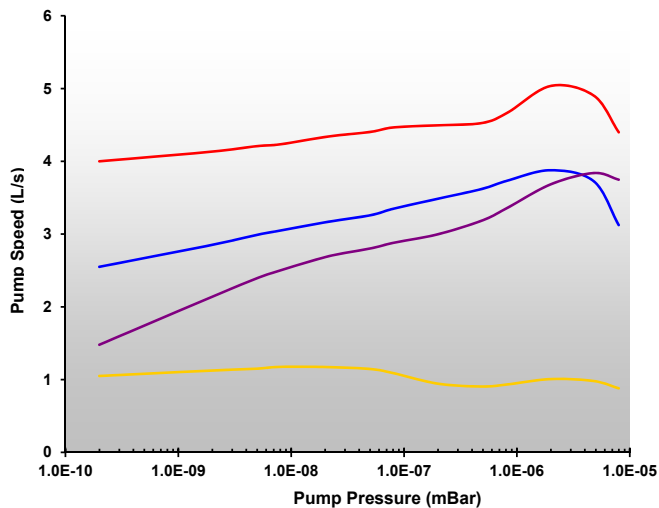
Element type	Ports	Feedthroughs	Heaters	TSP/NEG
CV Conventional 100% Titanium	2V Single DN 35 (2.75in. CFR) Vertically oriented	SC SAFECONN™ 10kV SHV	N No heaters	N Not available
DI Differential 50% Titanium 50% Tantalum		5K 5kV SHV		

\*Configured part numbers and pricing are available at [www.gammavacuum.com](http://www.gammavacuum.com). Contact us directly for custom engineered options.

## PERFORMANCE CHARACTERISTICS

### Pumping Speed vs. Pressure

measured in accordance with ISO/DIS 3556-1.2-1192



### Current vs. Pressure

