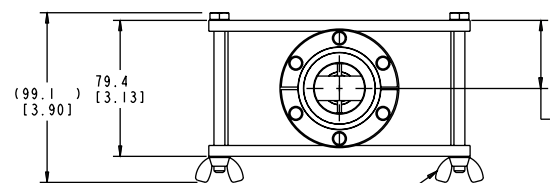
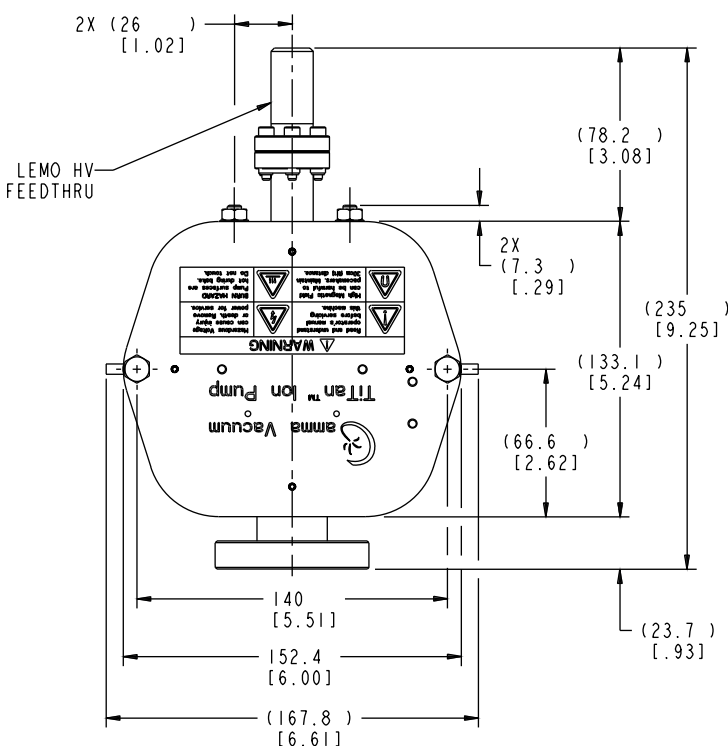


# Titan 10S Ion Pump

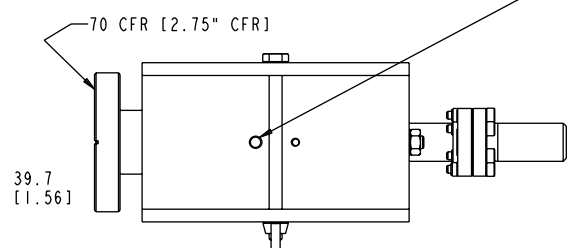


## DIMENSIONAL DETAILS\*



2X 1/4-20 UNC

USE 1/4-20 UNC SCREWS (2) TO DRIVE TWO FLUX PLATES APART FOR DIS-ASSEMBLY



\*Single inlet flange shown. Alternative configurations available at [www.gammavacuum.com](http://www.gammavacuum.com)

# Technical specifications

Element type	CV/CVX	DI/DIX
Pumping speed (l/s, Nitrogen)	10	8
Starting pressure (mbar)	$\leq 1 \times 10^{-3}$	$\leq 1 \times 10^{-3}$
Lifetime (hours @ $10^{-6}$ mbar)	50,000	
Ultimate pressure (mbar)	$\leq 1 \times 10^{-11}$	
Maximum baking temperature (°C)	250 / 450 (without magnets)	
Inlet flange	DN 35 (2.75 in.) CFR	
Weight, kg (lbs)	6 (13)	

## STANDARD OPTIONS\*

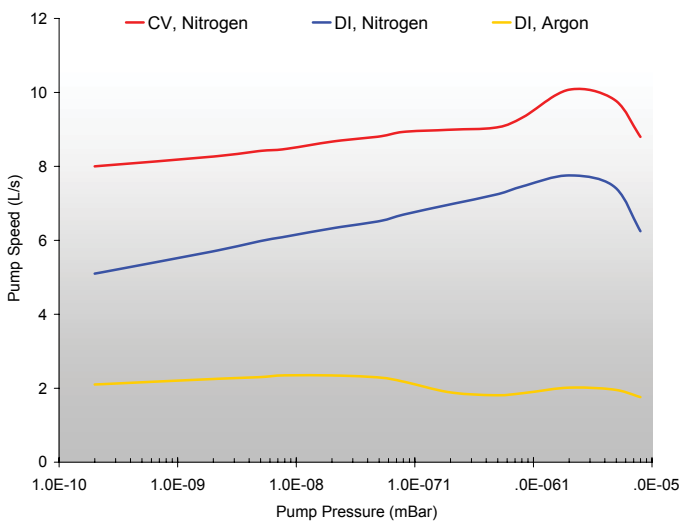
Element type	Ports	Feedthroughs	Heaters	TSP/NEG
CV Conventional 100% Titanium	1H Single DN 35 (2.75 in. CFR) Horizontally oriented	5K SAFECONN 10kV SHV	N No heaters	N Not available
DI Differential 50% Titanium 50% Tantalum		OV Old varian	110-volt 90-130 nominal	
		FI Fisher	220-volt 200-240 nominal	

\*Configured part numbers and pricing are available at [www.gammavacuum.com](http://www.gammavacuum.com). Contact us directly for custom engineered options.

## PERFORMANCE CHARACTERISTICS

### Pumping Speed vs. Pressure

measured in accordance with ISO/DIS 3556-1.2-1192



### Current vs. Pressure

