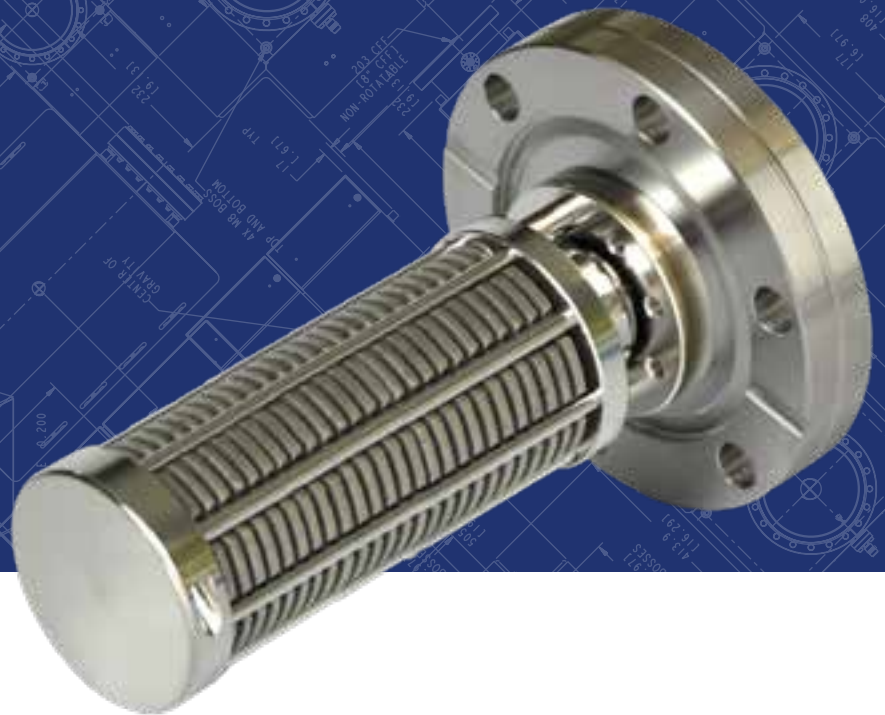
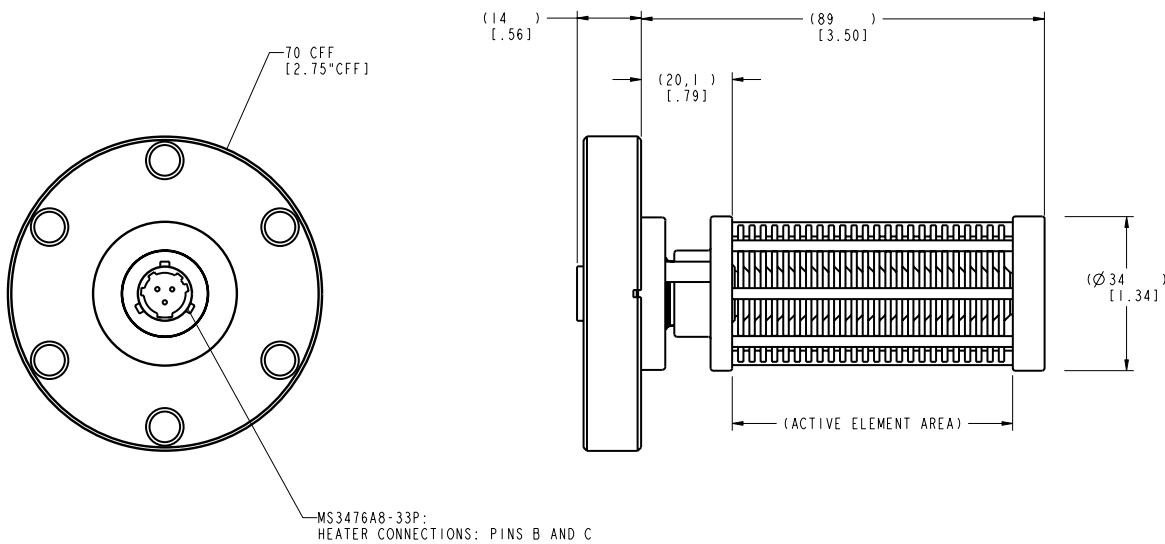


# N200 Non-Evaporable Getter



## DIMENSIONAL DETAILS\*



\* Pumping speeds reference initial speed values at 25° C in exposed configuration

# Technical specifications

	H2	CO (25°C)	CO (total)
Pumping speed, l/s*	208	94	
Sorption capacity, torr · l	2160	0.4	972
Alloy composition	Zr (70%), V (24.6%), Fe (5.4%)		
Getter mass, g	108		
Getter surface area, cm <sup>2</sup>	642		
Total mass, kg (lbs)	0.75 (1.65)		
Flange	DN 35 (2.75 in.) CFF		

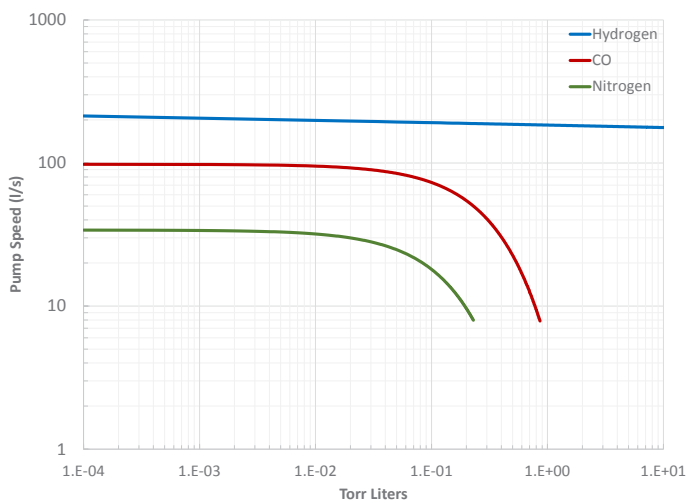
## ORDERING INFORMATION

Part number	Description	Compatible products
N200	NEG 200, 2.75 CF MS3476A8-33P Compatible	Side/internally mountable on 45S, 75S
NEGQ-1-US110-S-S-N	NEG Pump Controller	N50, N100, N200, N300, N400
XLR-S3-N200	XLR to N200, Silicone	N200

\*Configured part numbers and pricing are available at [www.gammavacuum.com](http://www.gammavacuum.com). Contact us directly for custom engineered options.

## PERFORMANCE CHARACTERISTICS

**Pumping Speed vs. Sorbed Quantity**  
measured in accordance with ASTM F798-97



**Temperature vs. Current/Volts**  
applies to N200

