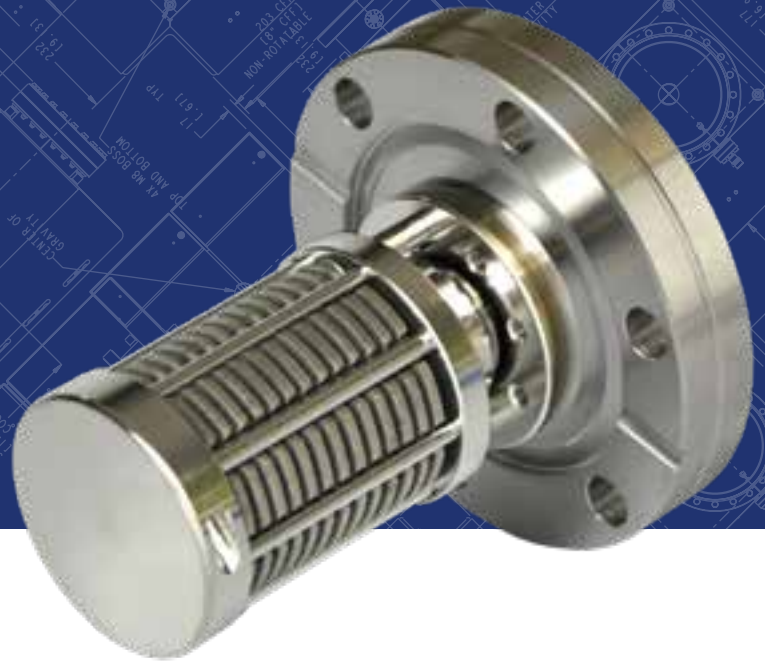
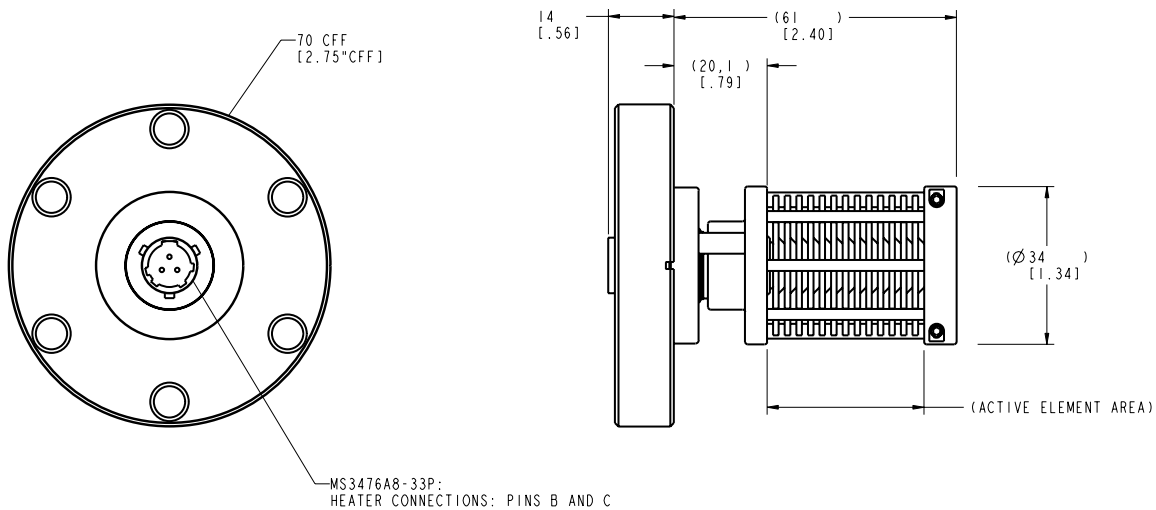


# N100 Non-Evaporable Getter



## DIMENSIONAL DETAILS\*



\*Pumping speeds reference initial speed values at 25° C in exposed configuration

# Technical specifications

	H2	CO (25°C)	CO (total)
Pumping speed, l/s*	106	51	
Sorption capacity, Torr • l	1170	0.2	526
Alloy composition	Zr (70%), V (24.6%), Fe (5.4%)		
Getter mass, g	58		
Getter surface area, cm <sup>2</sup>	348		
Total mass, kg (lbs)	0.54 (1.19)		
Flange	DN 35 (2.75 in.) CFF		

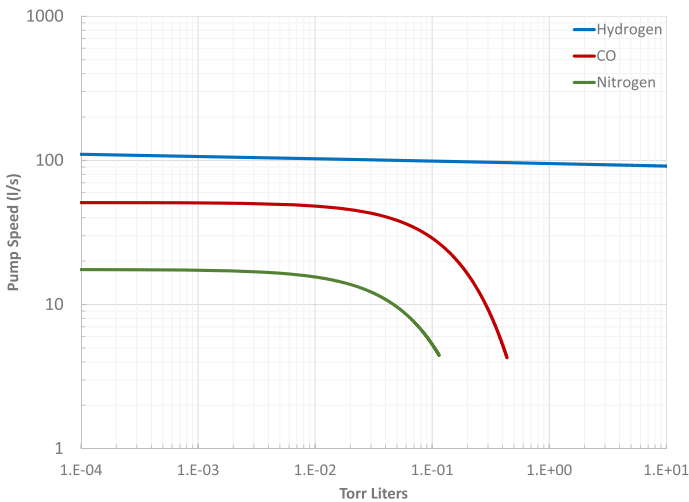
## ORDERING INFORMATION

Part number	Description	Compatible products
N100	NEG 100, 2.75 CF MS3476A8-33P Compatible	Side/internally mountable on 25S, 45S, 75S
NEGQ-1-US110-S-S-N	NEG Pump Controller	N50, N100, N200, N300, N400
XLR-S3-N100	XLR to N100, Silicone	N300

\*Configured part numbers and pricing are available at [www.gammavacuum.com](http://www.gammavacuum.com). Contact us directly for custom engineered options.

## PERFORMANCE CHARACTERISTICS

**Pumping Speed vs. Sorbed Quantity**  
measured in accordance with ASTM F798-97



**Temperature vs. Current/Volts**  
applies to N100

