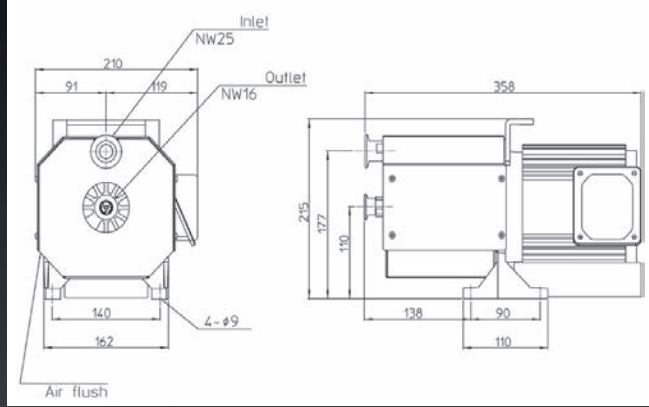


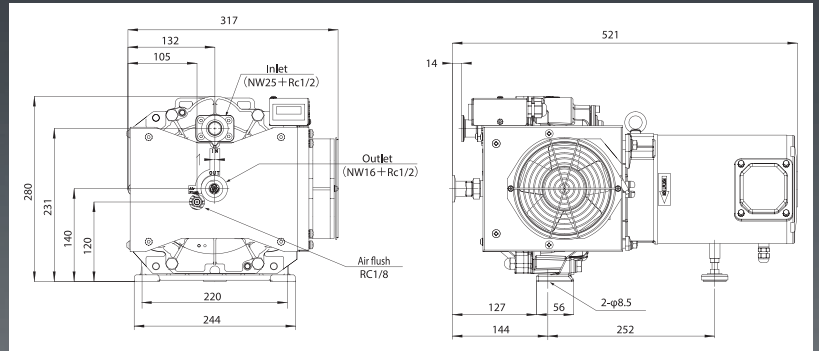
DRY SCROLL VACUUM PUMP



DVSL-100C



DVSL-500E/501E



DVSL-501E-HC

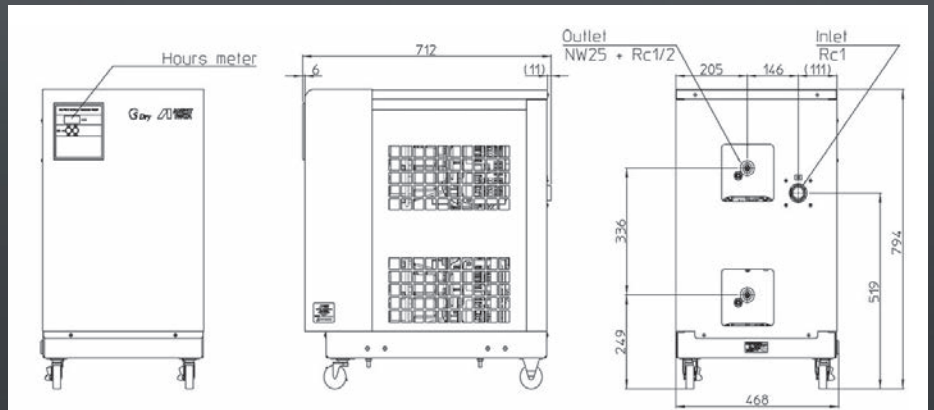


Introducing the HC model with increased durability in DVSL series! It lasts three-times longer than the standard model, thanks to the specialized finishing which is applied to the sliding surface. It is highly recommended to end-users who process water vapor frequently.

■ Product dimensions are the same as the DVSL-501C.

• Numbers and values are comparison to our current products and reference only. Results are varied depending upon application and condition of use.

DVSL-1002E



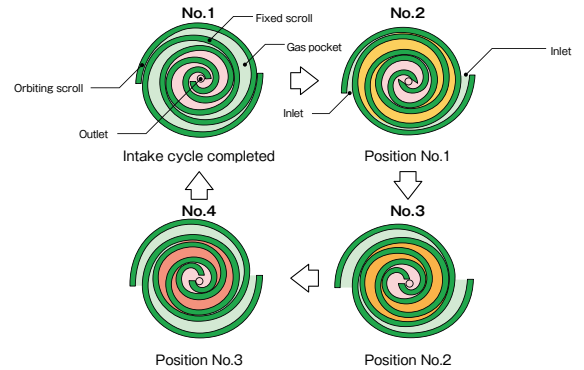
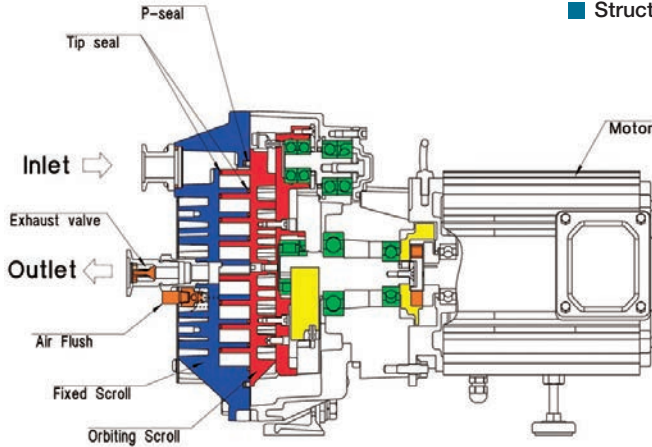
DRY SCROLL VACUUM PUMP

Excellence in continuous operation between atmosphere and vacuum and in displacing water vapor.

Application

- Vacuum Chuck
- Vacuum Transport
- Vacuum Forming
- Cryopump Regeneration
- Leak Test
- Roughing for TMP
- Deaerator
- Gas Substitution
- Vacuum Drying
- Vacuum Packing

Structure



Principle of compression

As the orbiting scroll orbits as shown in the illustration from No.1 position to No.4 position, crescent shaped gas pockets are gradually reduced. At the last stage, compressed gas is exhausted through the center port.

Air Flush

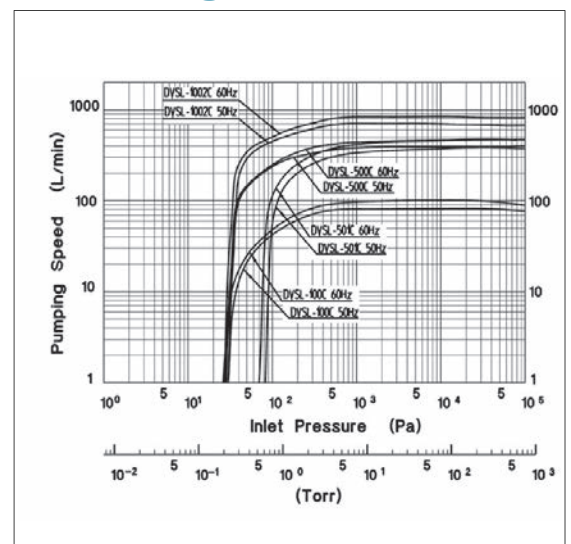
Purpose of Air Flush

Pumping of humid gas by vacuum pump can cause condensed moisture to remain in pump. This remaining moisture can cause failure to ultimate pressure or pump. Air Flush operation is necessary to pump remaining moisture inside the pump. Air Flush operation does not only pump remaining moisture but also recovers ultimate pressure.

Specifications

Trade name		Oilfree Scroll Vacuum Pump			
Model		DVSL-100C	DVSL-500E	DVSL-501E	DVSL-1002E
Pumping speed (50 Hz)	L/min	100	430	430	845
	m ³ /h	6,0	25,8	25,8	50,7
Ultimate pressure (50Hz)	≅ Pa	50	30	100	30
	≅ mbar	$5,0 \times 10^{-1}$	$3,0 \times 10^{-1}$	$1,0 \times 10^{-0}$	$3,0 \times 10^{-1}$
Motor power	kW	0,3	0,9	0,9	2,4
Voltage	V	Single phase 100,115,200,230	-		-
		Three-phase	200,208,230,380,400,415,460		200,220
Noise level	dB(A)	≅ 62 (at air flush 65)	≅ 64 (at air flush 69)		≅ 69 (at air flush 74)
Weight	Kg	Single phase 15	-		-
		Three-phase	36		118
Water vapor	g/day	100 (at air flush)	250 (at air flush)		500 (at air flush)
Air flush	L/min	5 (at air flush)	10 (at air flush)		20 (at air flush)
Inlet connection	NW	NW25 (with Rc 3/8)	NW25 (with Rc 1/2)		Rc 1
Outlet connection	NW	NW16 (with Exhaust valve)	NW25 (with Exhaust valve)		
Cooling system		air-cooled			
Ambient temperature	°C	5-40			
Back-up material		Fluorine rubber	Silicon rubber	Fluorine rubber	Silicon rubber

Pumping speed



• Pumping speed of DVSL-501C-HC is the same as the DVSL-501C.