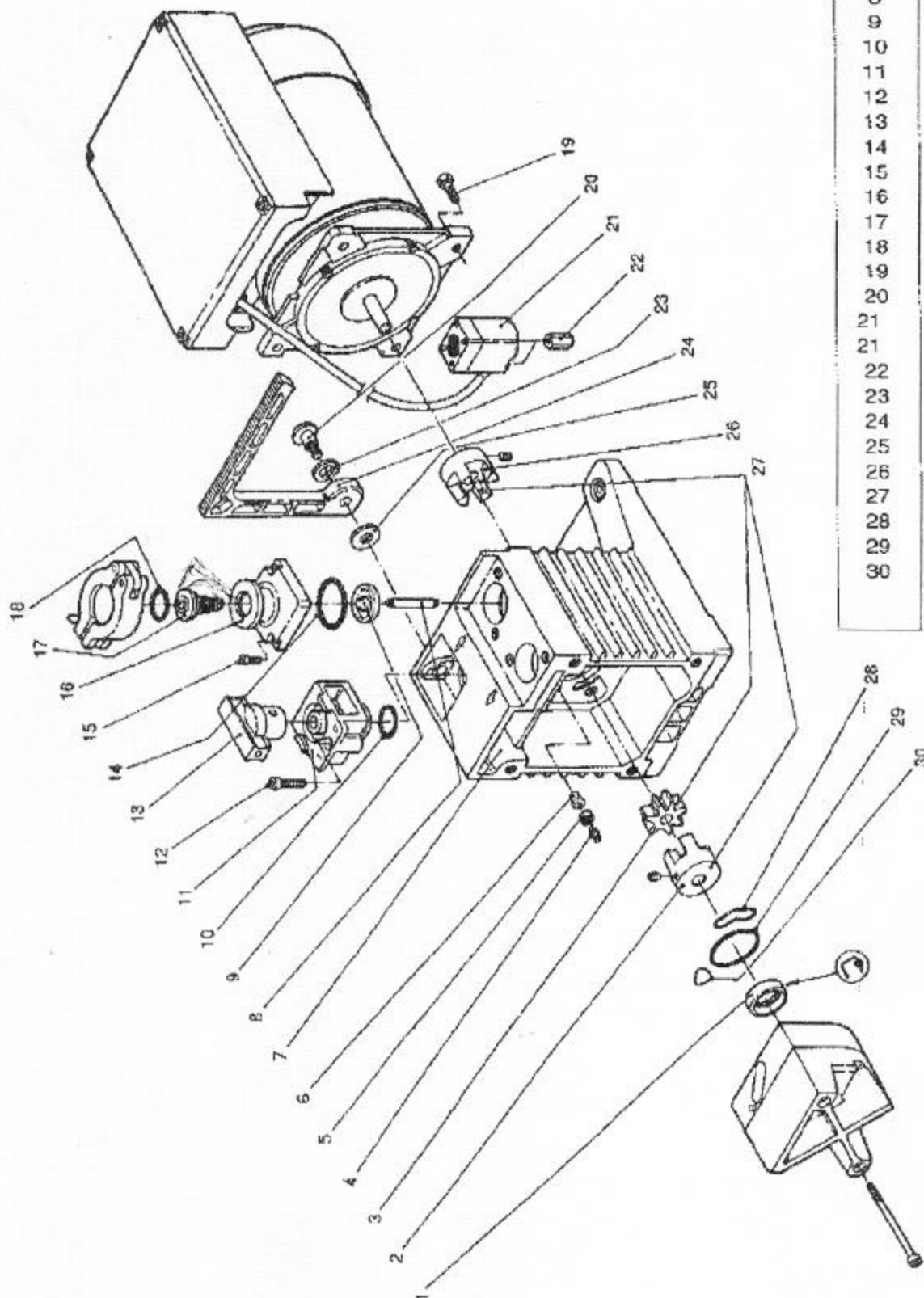


D1.6B Pump Module

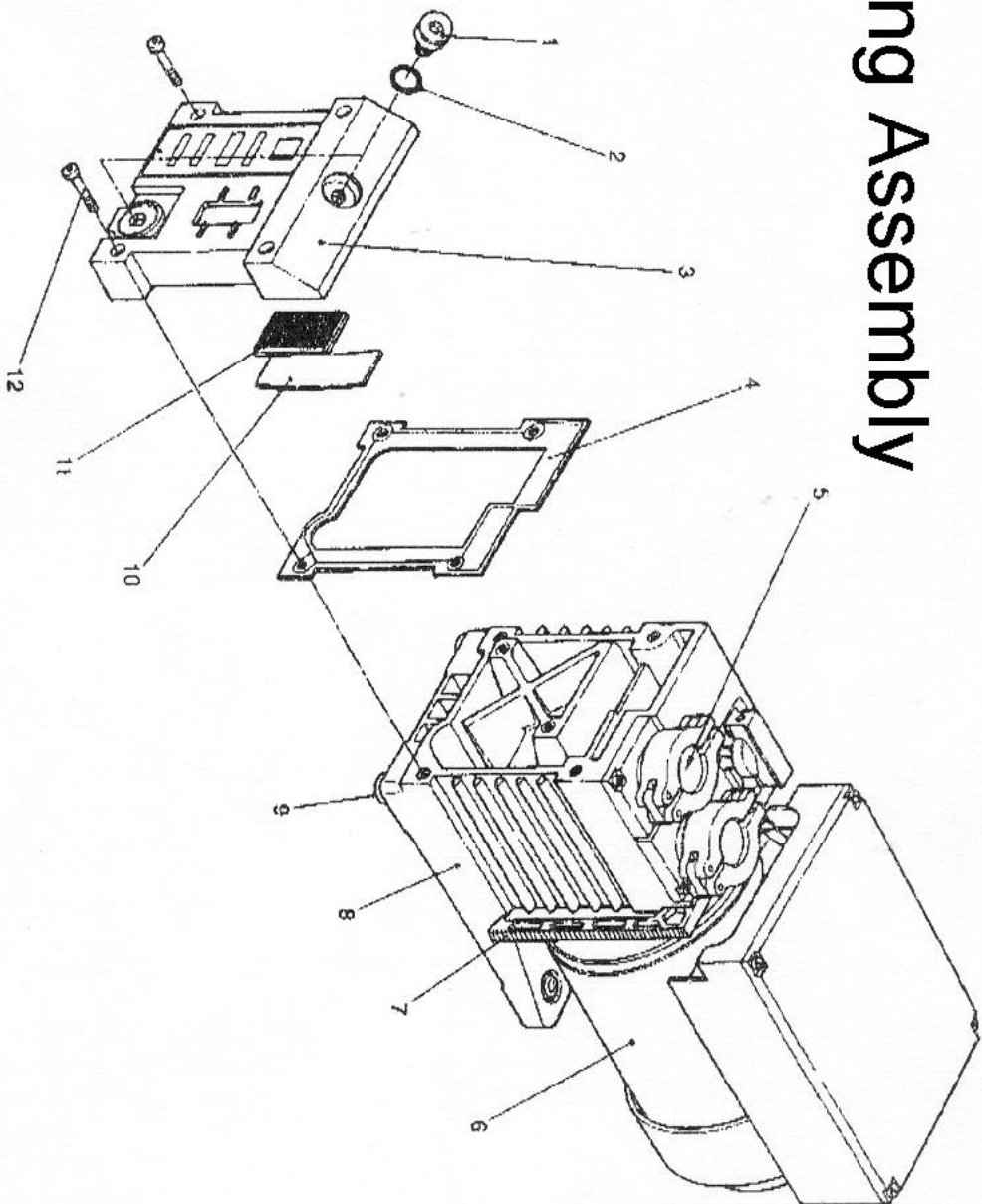


Pos. Description

1	Radial shaft seal
2	Coupling (pump)
3	Toothed rim
4	Spring
5	Non return valve
6	Plug seal
7	Coupling housing
8	Piston
9	Valve plat
10	O-ring
11	Gasballast valve
12	Cylinder screw
13	Lever gasballast
14	O-ring
15	Cylinder screw
16	Connection port
17	Dirt trap
18	O-ring
19	Cylinder screw
20	Shoulder screw
21	Magnet valve
21	Magnet valve
22	Threaded bushing
23	Spring washer
24	Handle
25	Washer
26	Coupling (motor)
27	Coupling compl.
28	O-ring
29	O-ring
30	O-ring

D1.6B

Housing Assembly

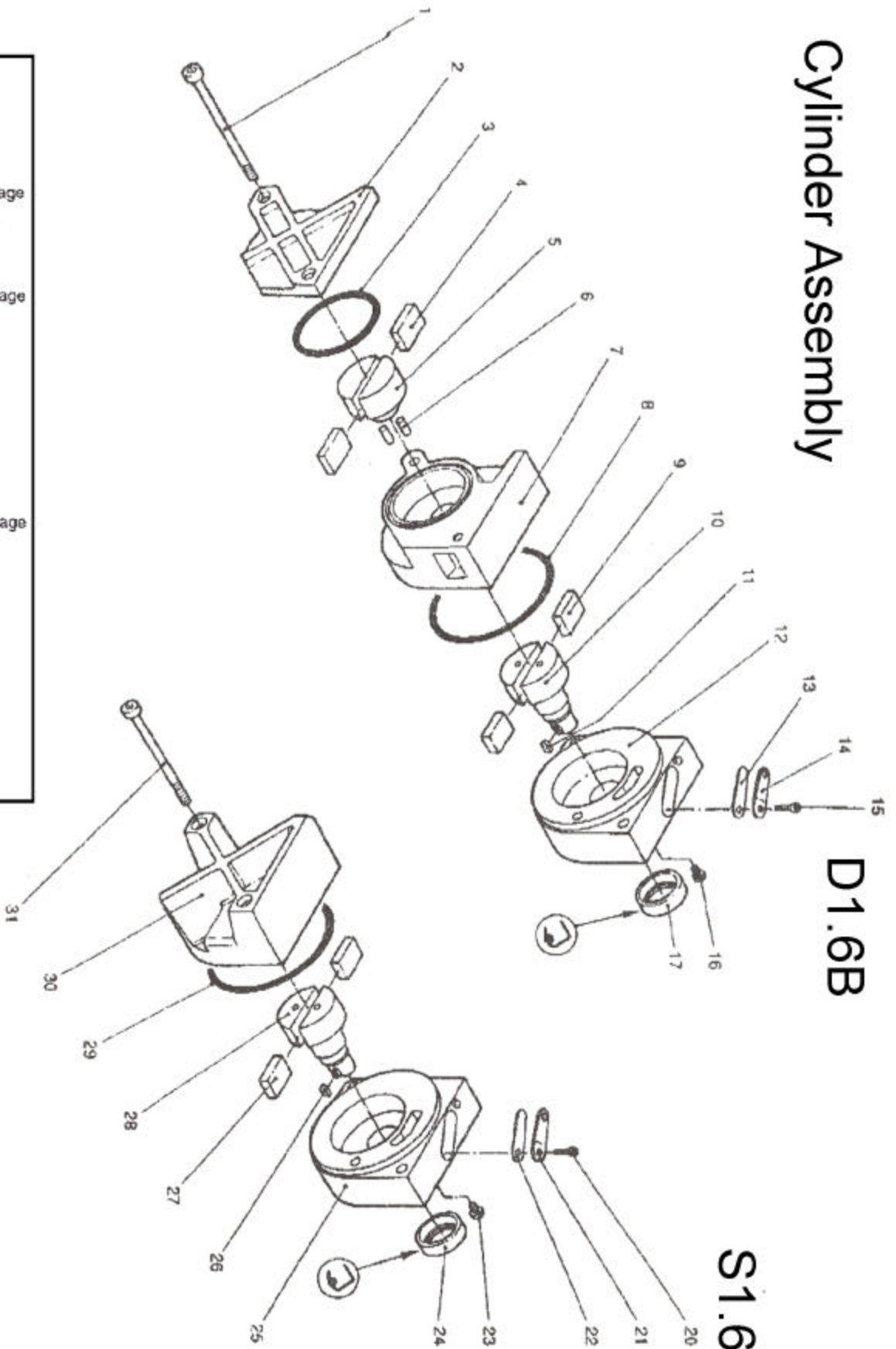


Pos.	Description
1	Plug screw
2	Gasket ring
3	Housing cover
4	Gasket
5	Centering ring
6	AC-Motor 1 phase
6	AC-Motor 1 phase
6	AC-Motor 1 phase
6	AC-Motor 1 phase
6	AC-Motor 1 phase
6	AC-Motor 1 phase
7	Handle
8	Coupling housing
9	Foot
10	Reflector sheet
11	Oil level glass
12	Cylinder screw

Cylinder Assembly

D1.6B

S1.6B



Pos.	Description
1	Cylinder screw
2	Rear end plate
3	O-ring
4	Vane
5	Rotor HV-stage
6	Cylindrical pin
7	Pump cylinder HV-stage
8	O-ring
9	Vane
10	Rotor forestage
11	Key
12	Pump cylinder forestage
13	Valve plate
14	Valve stop
15	Cylinder screw
16	Nozzle
17	Radial shaft seal
20	Cylinder screw
21	Valve stop
22	Valve plate
23	Nozzle
24	Radial shaft seal
25	Pump cylinder forestage
26	Key
27	Vane
28	Rotor forestage
29	O-ring
30	Rear end plate
31	Cylinder screw