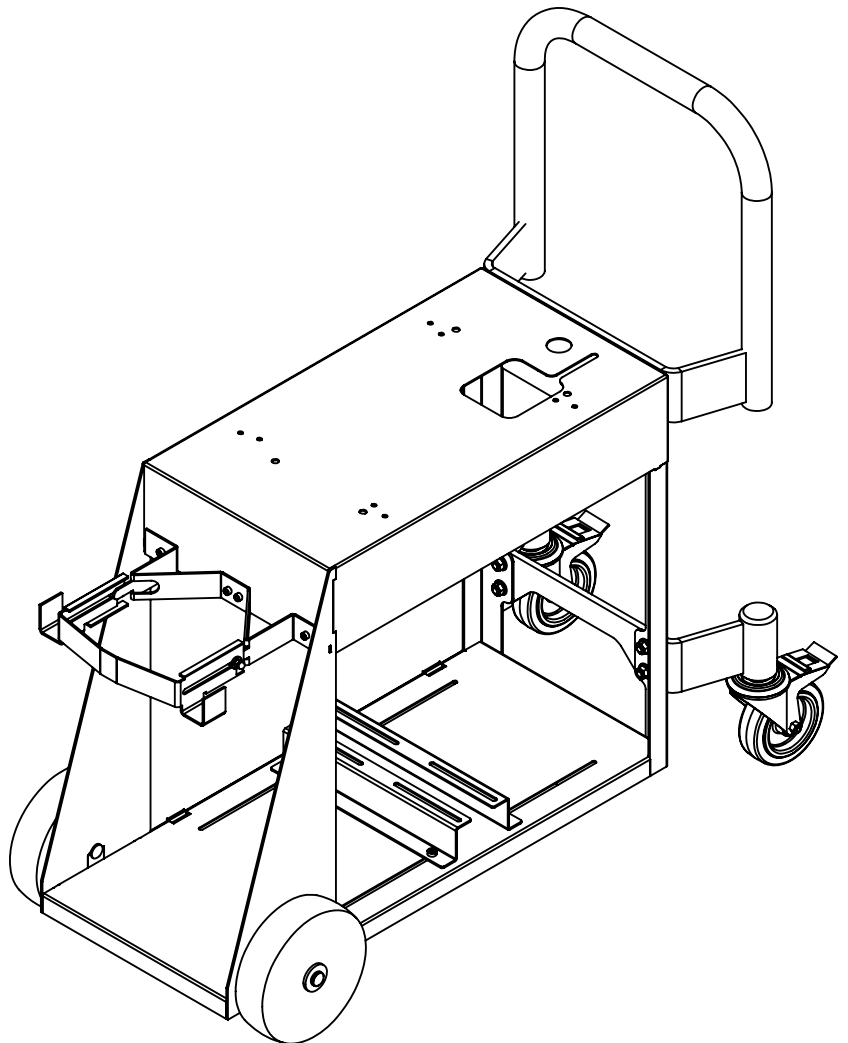


PHOENIX Cart 4

Brief Instructions 300812674_002_C0
Supplement to Operating Instructions 300700189

Part Number
252005V02



Safety Information

	Page
0 Important Safety Information	2
1 Description	3
2 Installation	5
2.1 Leak Detector	5
2.2 Pumps	6

DANGER



0 **Important Safety Information**

Please observe all safety information in the operating instructions for the individual components; in particular the operating instructions 300700189 for the leak detector.



Fig. 1 PHOENIX Cart with mounted PHOENIX Quadro

1 Description

The Cart 4 is suited for the PHOENIX Quadro and PHOENIX Vario leak detectors. For the PHOENIX Magno, a simple one-plate cart is available (PN 252008V02).

The Cart 4 offers the following features:

- Holes for mounting leak detectors on the upper plate
- Flexible fixing possibility for pumps in the lower plate
- Helium bottle holder for bottles of up to 205 mm diameter
- Drawer for accessories, instruction manuals etc.
- Front plate can be demounted

The cart is made of steel and is powder coated.

Description

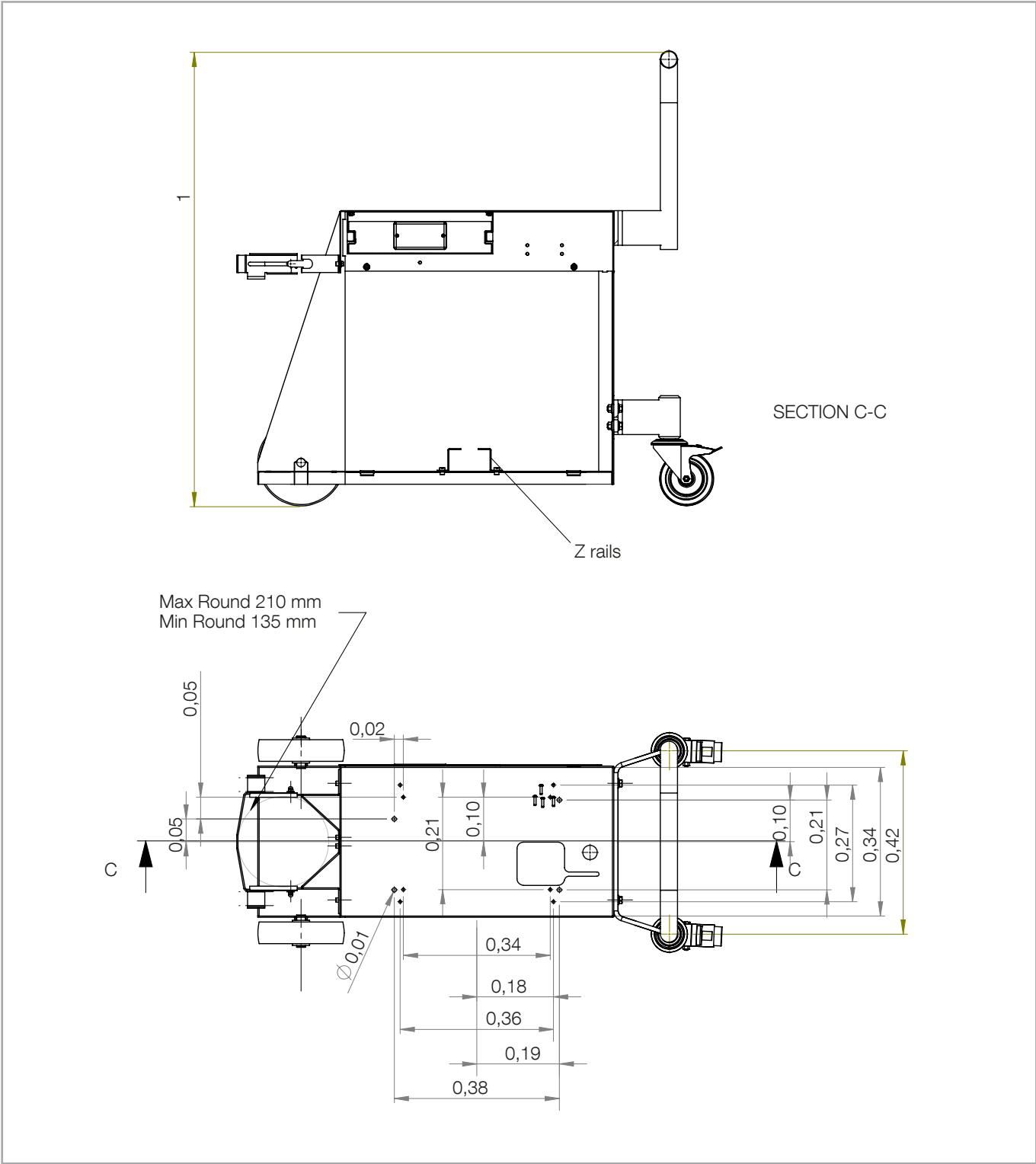


Fig. 2 Dimensions in m

2 Installation

To ensure a safe operation of the leak detector fix the leak detector and pump to the cart.

2.1 Leak Detector

The leak detectors are equipped with boreholes in their feet. Matching screws are provided in the cart's drawer.

There are three different hole structures on the upper plate (3 x 4 holes for three leak detector versions: PHOENIX Quadro, PHOENIX Vario and PHOENIX L300i).

Fix the leak detector with four screws to the upper plate.

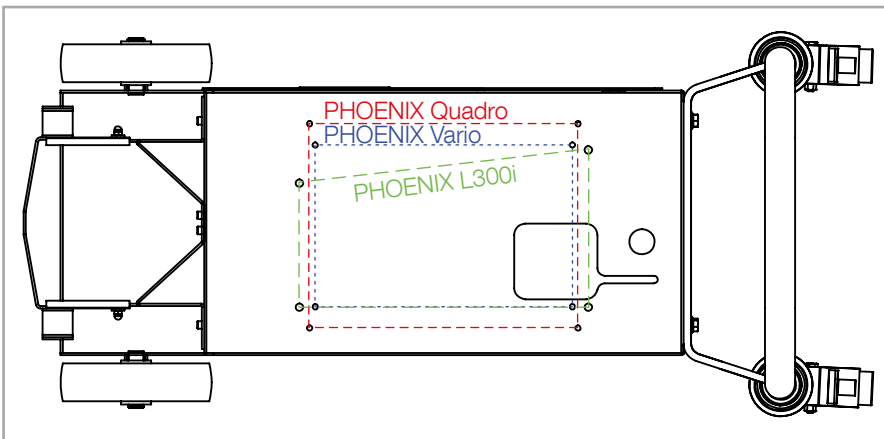


Fig. 3 Mounting holes in the upper plate for various leak detectors

Mount the leak detector with the rubber feet to the holes using the longer screws. The longer screws are included in the delivery and are stored in the drawer.



Fig. 4 Mount the leak detector with the rubber feet

Installation

The PHOENIX Vario can be connected to the external forepump via the connection in the bottom of the leak detector.



Fig. 5 Forepump connection for PHOENIX Vario

2.2 Pumps

The lower plate fits different pumps of different sizes. Two Z-rails must be fixed to the pump for left-right variation.

First mount the Z-rails to the pump feet. Then fix each Z-rail to the cart with two screws (one for each long-hole).



Fig. 6 Z-rails fixed to the cart

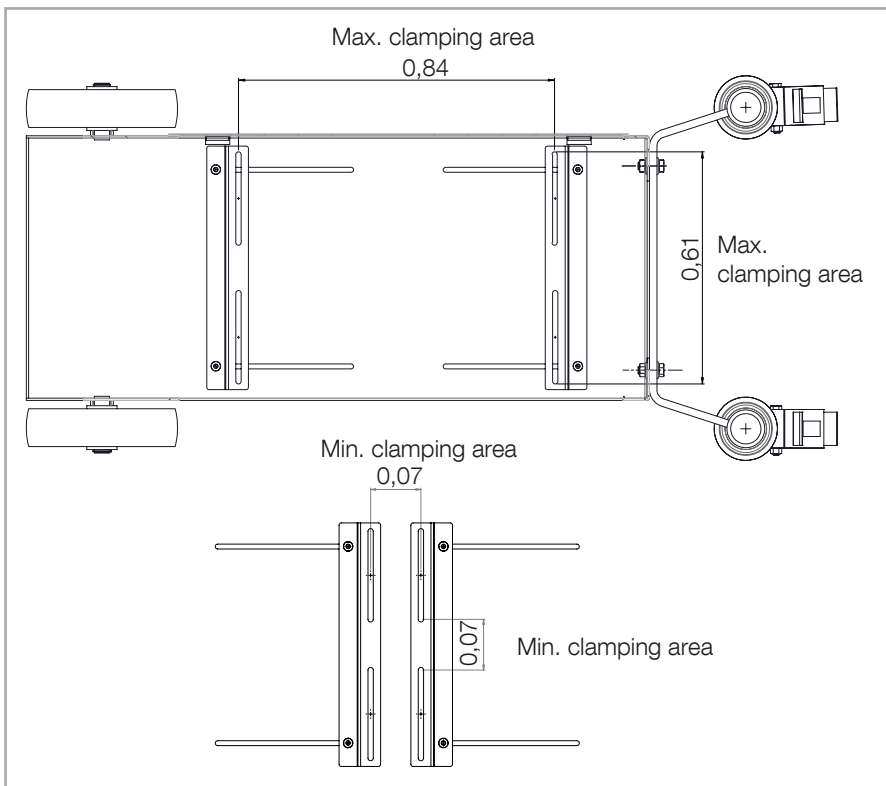


Fig. 7 Clamping area for the Z-rails

The ECODRY must be mounted differently due to the wheels. Roll the ECODRY into the cart and then fix it as shown in Fig. 8.

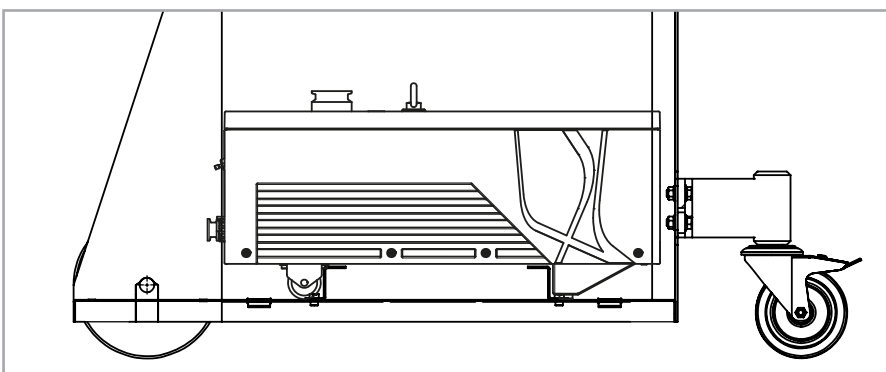


Fig. 8 ECODRY fixed with Z-rails



Pioneering products. Passionately applied.

Leybold GmbH
Bonner Strasse 498
50968 Cologne
GERMANY
T: +49-(0)221-347-0
info@leybold.com
www.leybold.com