



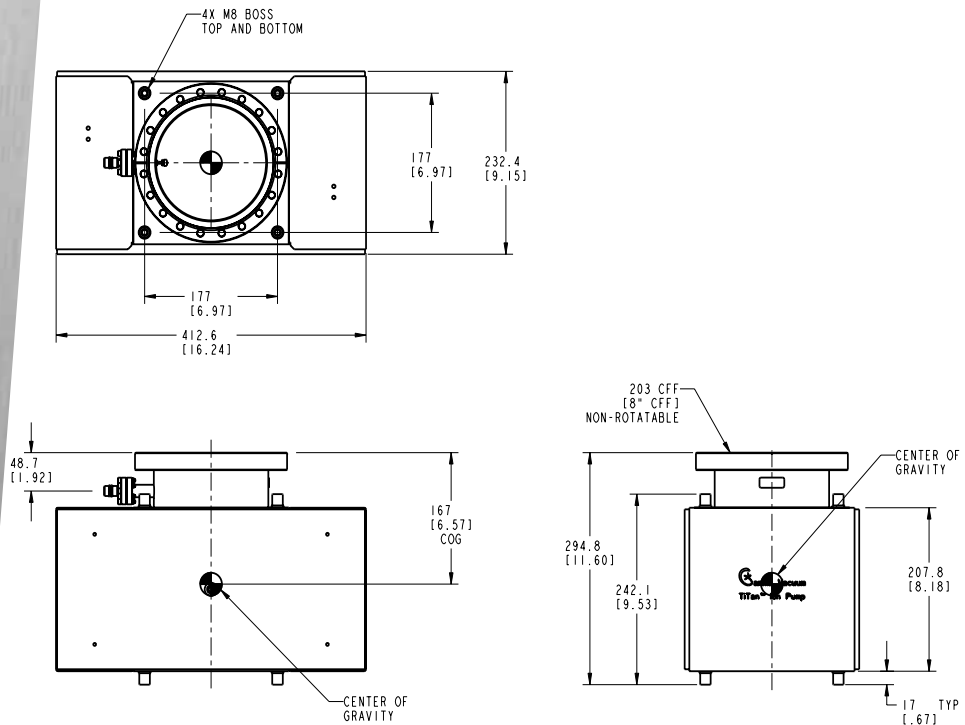
# TiTan™ 200L Ion Pump



## TECHNICAL SPECIFICATIONS

| Element Type                      | CV/CVX                      | DI/DIX                  | TR                      |
|-----------------------------------|-----------------------------|-------------------------|-------------------------|
| Pumping Speed (l/s, Nitrogen)     | 200                         | 160                     | 160                     |
| Starting Pressure (mbar)          | $\leq 1 \times 10^{-3}$     | $\leq 1 \times 10^{-3}$ | $\leq 5 \times 10^{-2}$ |
| Lifetime (hours @ $10^{-6}$ mbar) | 50,000                      | 50,000                  | 80,000                  |
| Ultimate Pressure (mbar)          | $< 1 \times 10^{-11}$       |                         |                         |
| Maximum Baking Temperature (°C)   | 250 / 450 (without magnets) |                         |                         |
| Inlet Flange                      | DN 150 (8 in.) CFF          |                         |                         |
| Weight, kg (lbs)                  | 50 (112)                    |                         |                         |

## DIMENSIONAL DETAILS\*



\*Single inlet flange shown. Alternative configurations available at [www.gammavacuum.com](http://www.gammavacuum.com)

## STANDARD OPTIONS\*

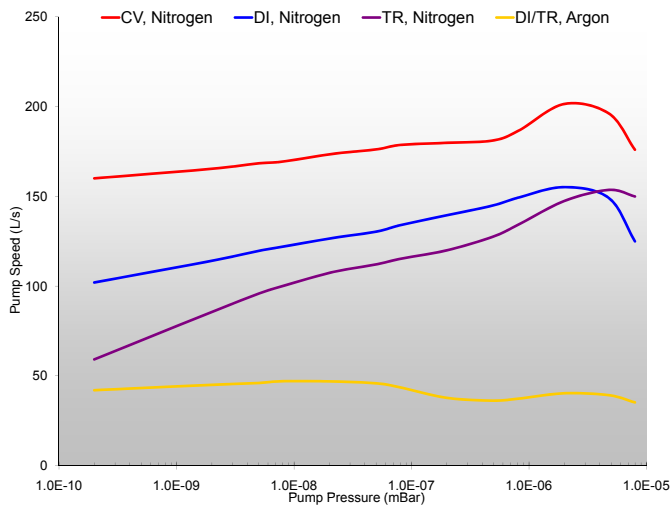
| Element Styles |  | Ports |                              | Feedthroughs |                       | Heaters |                             | TSP/NEG |                         |
|----------------|--|-------|------------------------------|--------------|-----------------------|---------|-----------------------------|---------|-------------------------|
| CV             | Conventional<br>100% Titanium                | 6S    | Single<br>DN 100 (6 in. CFF) | SC           | SAFECONN™<br>10kV SHV | N       | No Heaters                  | N       | Not Installed           |
| CVX            | Conventional<br>XHV Optimized                | 6D    | Double<br>DN 100 (6 in. CFF) | OP           | Perkin Elmer          | 110     | 110-volt<br>90-130 nominal  | TSPA    | TSP with Ambient Shield |
| DI             | Differential<br>50% Titanium<br>50% Tantalum | 8S    | Single<br>DN 150 (8 in. CFF) | OV           | Old Varian            | 220     | 220-volt<br>200-240 nominal | TSPC    | TSP with Cryo Shroud    |
| DIX            | Differential<br>XHV Optimized                | 8D    | Double<br>DN 150 (8 in. CFF) | VR           | StarCell              |         |                             | NEG     | N Series                |
| TR             | Triode<br>Slotted Titanium                   |       |                              | FI           | Fisher                |         |                             |         |                         |

\*Configured part numbers and pricing are available at [www.gammavacuum.com](http://www.gammavacuum.com). Contact us directly for custom engineered options.

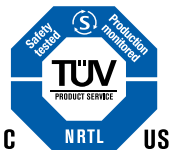
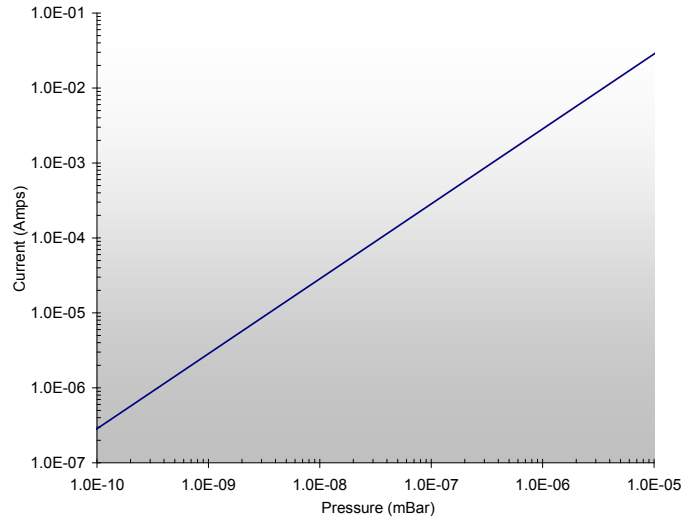
## PERFORMANCE CHARACTERISTICS

### Pumping Speed vs. Pressure

measured in accordance with ISO/DIS 3556-1.2-1192



### Current vs. Pressure



## GAMMA VACUUM

2915 133rd Street West  
Shakopee, MN 55379 | USA  
800.237.3603 T | 952.445.4841 P  
952.445.7615 F

[gammavacuum.com](http://gammavacuum.com) | [info@gammavacuum.com](mailto:info@gammavacuum.com)